



EXCELLANCE



Discover **The Mobile Stroke Unit** From Excellence

EXCELLANCE, Inc. has always been on the leading edge of custom-built emergency vehicles. EXCELLANCE continues this tradition with its new **Mobile Stroke Treatment Unit**. This **MOBILE STROKE TREATMENT AMBULANCE** is the key component to quick diagnosis and treatment of stroke symptoms, ultimately saving lives.

Life-Saving Innovation

- Save lives, save brain function, save post-hospitalization costs.
- Onboard telemedicine unit allows communication with hospital personnel.
- Begin thrombolytic treatment immediately on scene.

Contact us:

Excellance, Inc.
453 Lanier Rd.
Madison, AL 35758
Phone: 1-800-882-9799
www.excellance.com

EXCELLANCE, INC.



This unique ambulance is equipped with lab and telemedicine systems allowing technicians working in the ambulance to interact with a neurologist, and the neurologist to interact with the patient, in real time.

The neurologist is able to see the results of the CT scanner images and quickly make a life-saving diagnosis. The rapid diagnosis of the type of stroke determines if the clot-busting medicine TPA (Tissue Plasminogen Activator) can be administered.

DO YOU WANT TO LEARN MORE?

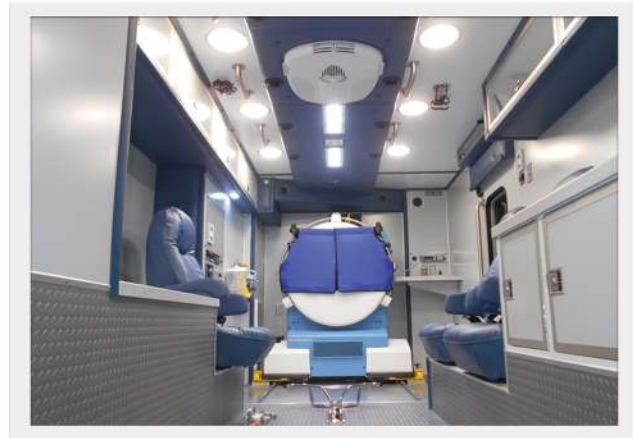
Excellance, Inc.

453 Lanier Rd.

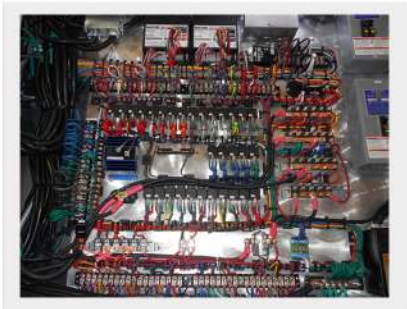
Madison, AL 35758

Phone: 1-800-882-9799

www.excellance.com



On board the mobile stroke unit is the Ceretom portable CT scanner.



**Electro-Mechanical
Hard Wired System**



A stroke can happen to anyone at any time.

There are nearly 7 million stroke survivors in the U.S. Stroke is the 5th leading cause of death in the U.S.

How to spot a stroke

Facial drooping

Arm weakness or numbness

Speech difficulties

Time to call 9-1-1